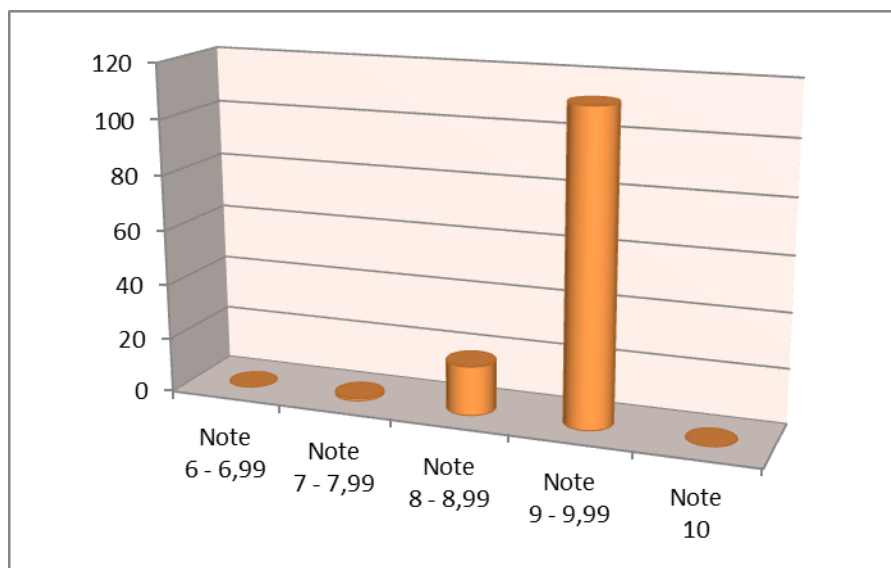
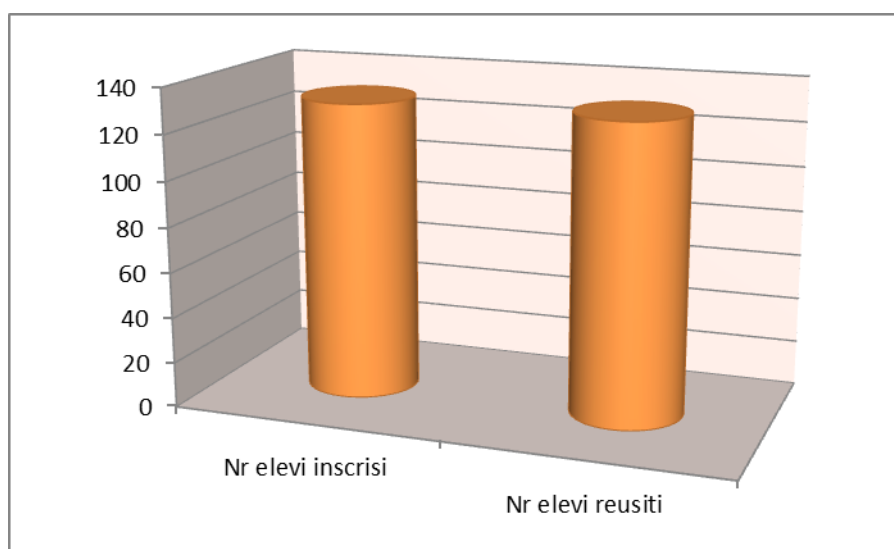


REZULTATE BACALAUREAT – CURS ZI SESIUNEA IUNIE – IULIE 2015

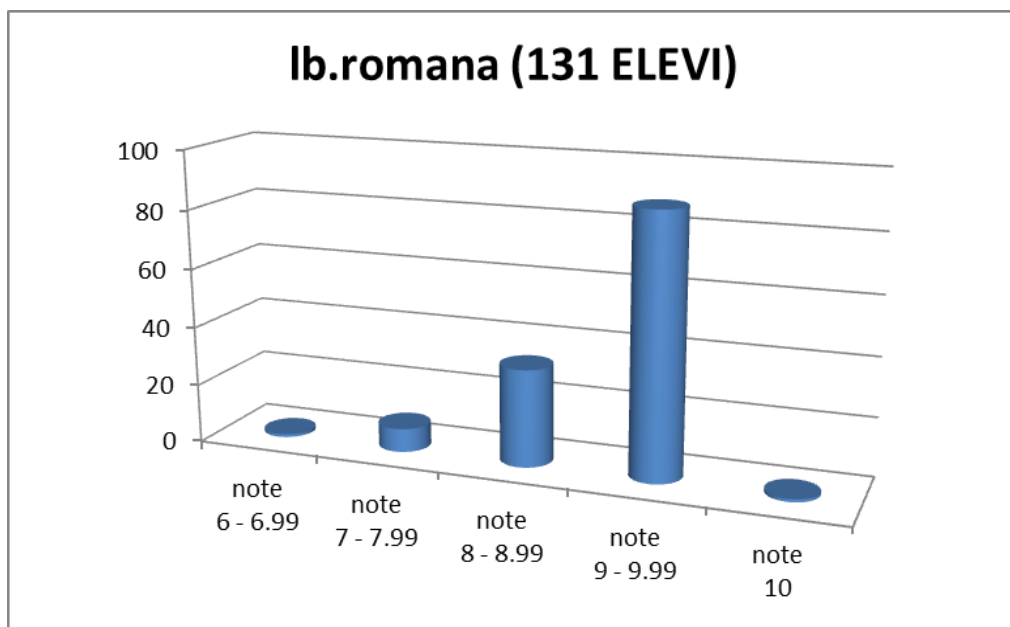
PROMOVABILITATE 100%

Nr elevi inscrisi	Nr elevi reusiti	Note 6 - 6,99	Note 7 - 7,99	Note 8 - 8,99	Note 9 - 9,99	Note 10
131	131	0	1	18	112	0
		0.00%	0.76%	13.74%	85.50%	0.00%



REZULTATE PROBA E)A) - LIMBA ȘI LITERATURA ROMÂNĂ

	note 6 - 6.99	note 7 - 7.99	note 8 - 8.99	note 9 - 9.99	note 10
lb.romana (131 ELEVI)	1	8	33	88	1

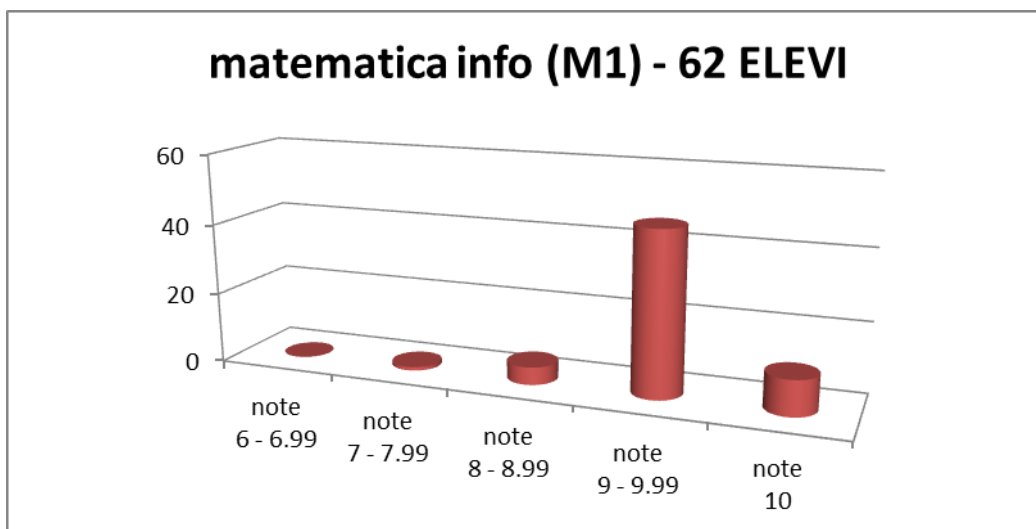


MEDIA NOTELOR OBȚINUTE LA LIMBA ROMÂNĂ - PROBA SCRISĂ

9,21

REZULTATE PROBA E)c) – PROBA OBLIGATORIE A PROFILULUI

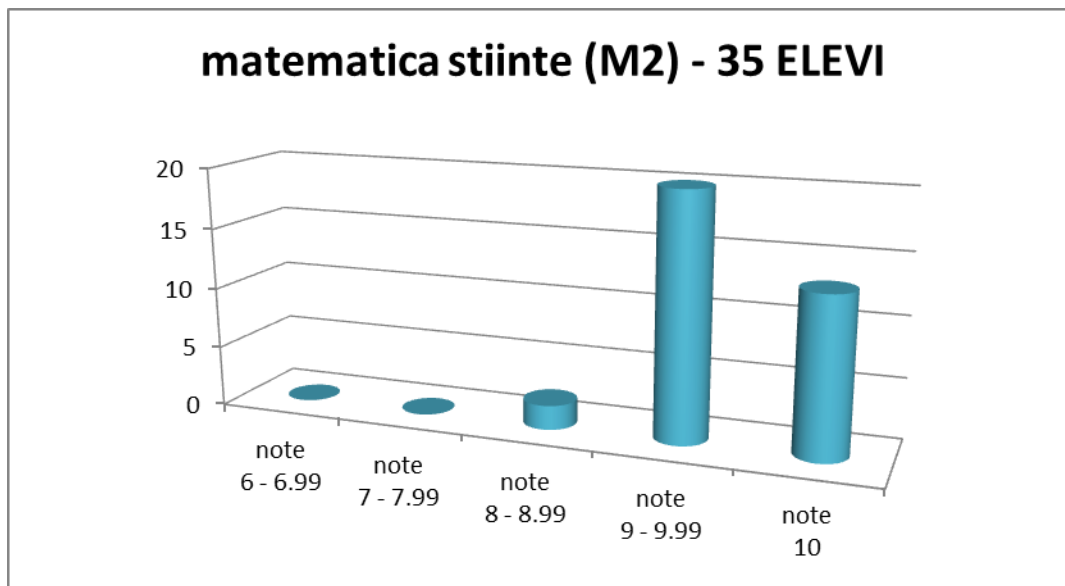
	note 6 - 6.99	note 7 - 7.99	note 8 - 8.99	note 9 - 9.99	note 10
matematica info (M1) - 62 ELEVI	0	1	5	46	10



MEDIA NOTELOR OBȚINUTE LA MATEMATICĂ INFO (M1)

9,41

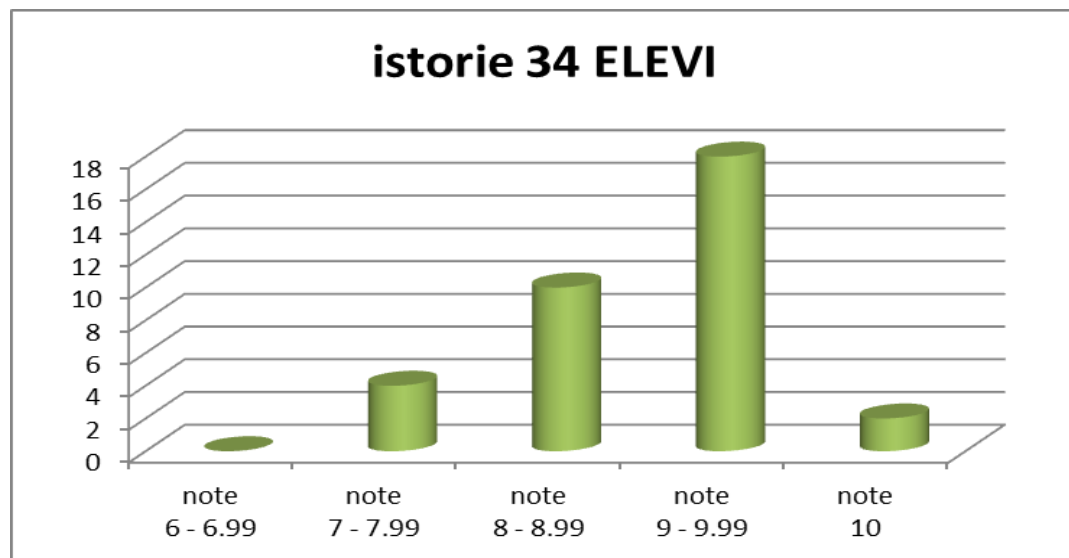
	note 6 - 6.99	note 7 - 7.99	note 8 - 8.99	note 9 - 9.99	note 10
matematica stiinte (M2) - 35 ELEVI	0	0	2	20	13



MEDIA NOTELOR OBȚINUTE LA MATEMATICĂ ȘTIINȚE (M2)

9,69

	note 6 - 6.99	note 7 - 7.99	note 8 - 8.99	note 9 - 9.99	note 10
istorie 34 ELEVI	0	4	10	18	2



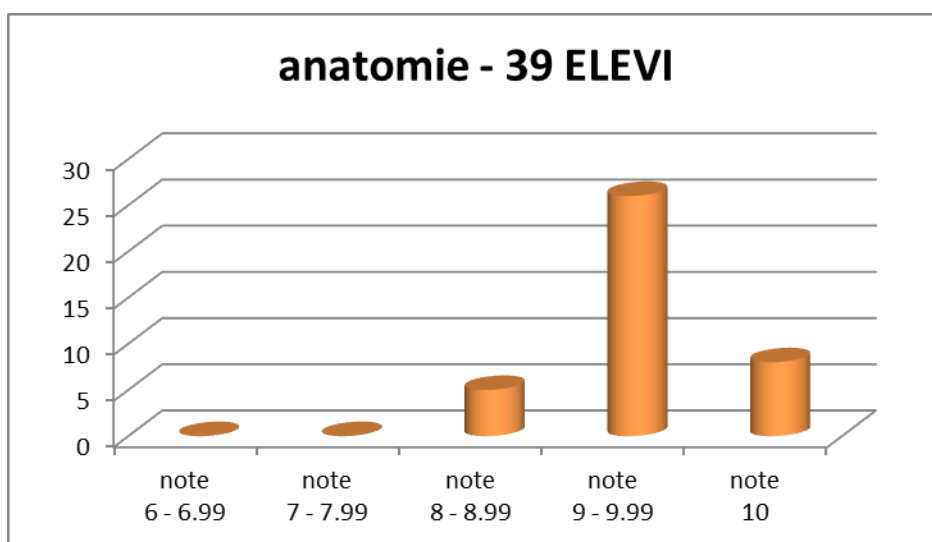
MEDIA NOTELOR OBȚINUTE LA ISTORIE

9,06

REZULTATE PROBA E)d) – PROBA LA ALEGERE A PROFILULUI SI SPECIALIZĂRII

ANATOMIE

	note 6 - 6.99	note 7 - 7.99	note 8 - 8.99	note 9 - 9.99	note 10
anatomie - 39 ELEVI	0	0	5	26	8

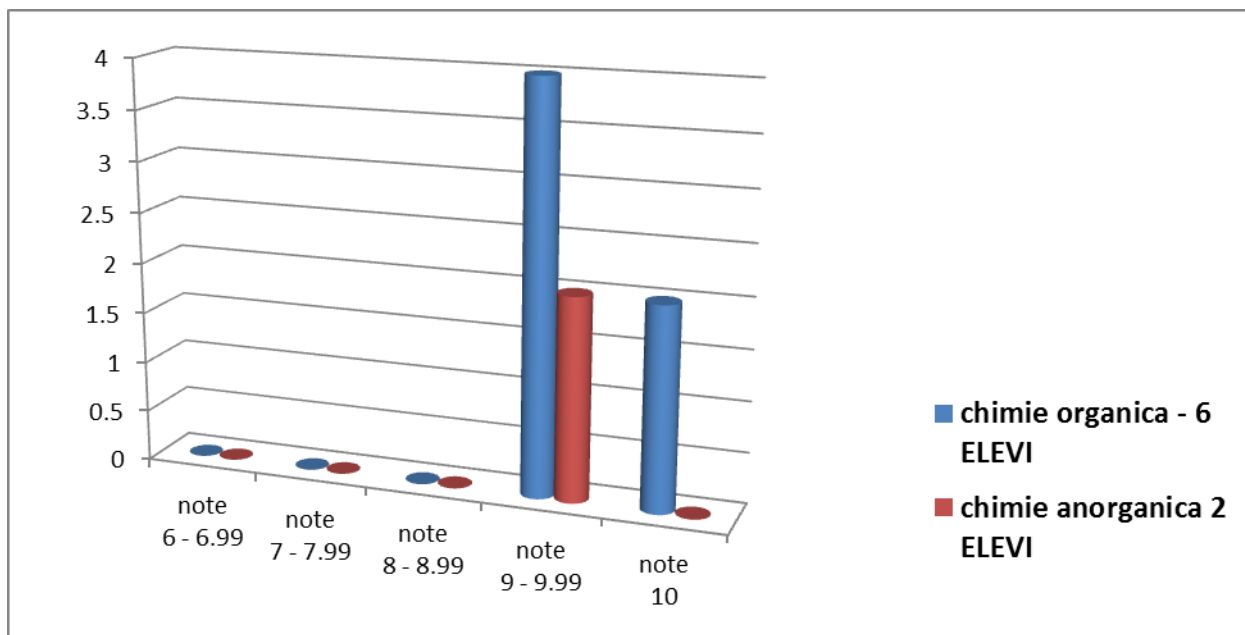


MEDIA NOTELOR OBȚINUTE LA ANATOMIE

9,52

CHIMIE

	note 6 - 6.99	note 7 - 7.99	note 8 - 8.99	note 9 - 9.99	note 10
chimie organica - 6 ELEVI	0	0	0	4	2
chimie anorganica 2 ELEVI	0	0	0	2	0



MEDIA NOTELOR OBȚINUTE LA CHIMIE ANORGANICĂ

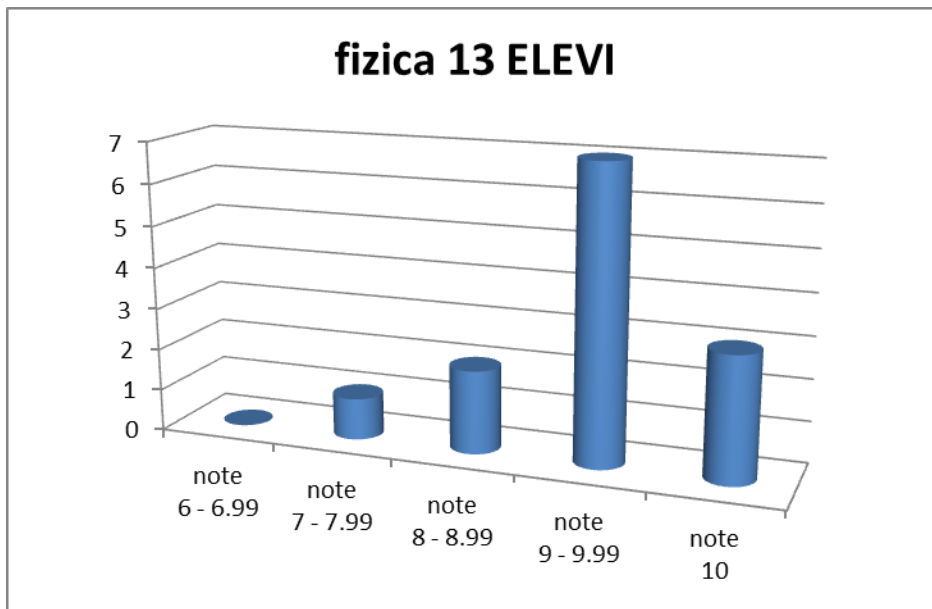
9,87

MEDIA NOTELOR OBȚINUTE LA CHIMIE ORGANICĂ

9,76

FIZICĂ

	note 6 - 6.99	note 7 - 7.99	note 8 - 8.99	note 9 - 9.99	note 10
fizica 13 ELEVI	0	1	2	7	3

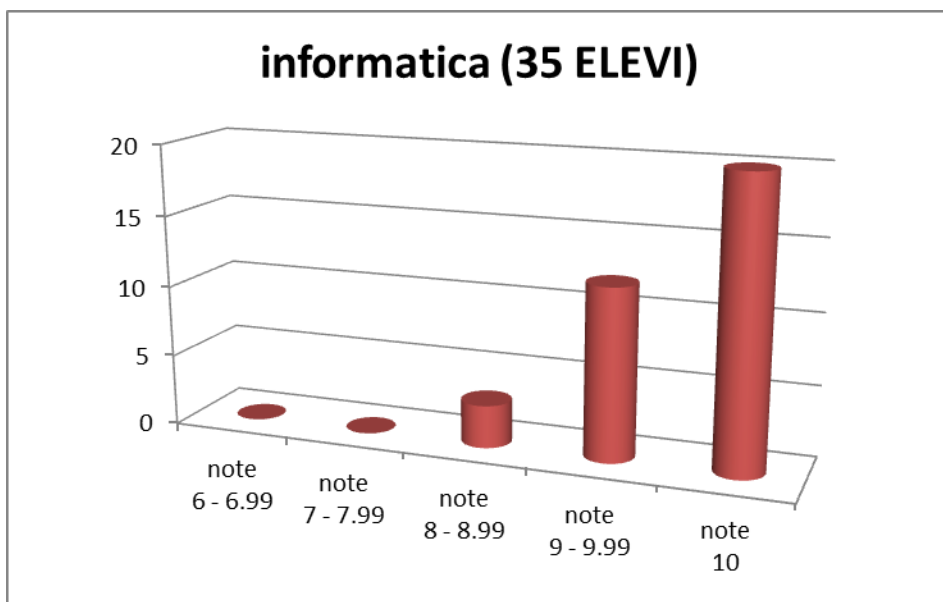


MEDIA NOTELOR OBȚINUTE LA FIZICĂ

9,29

INFORMATICA

	note 6 - 6.99	note 7 - 7.99	note 8 - 8.99	note 9 - 9.99	note 10
informatica (35 ELEVI)	0	0	3	12	20

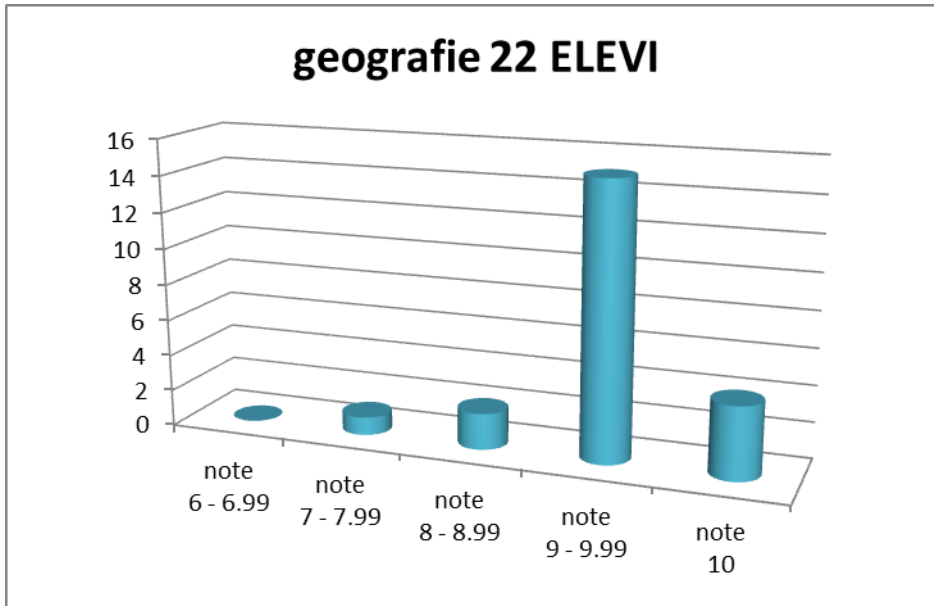


MEDIA NOTELOR OBȚINUTE LA INFORMATICĂ

9,78

GEOGRAFIE

	note 6 - 6.99	note 7 - 7.99	note 8 - 8.99	note 9 - 9.99	note 10
geografie 22 ELEVI	0	1	2	15	4

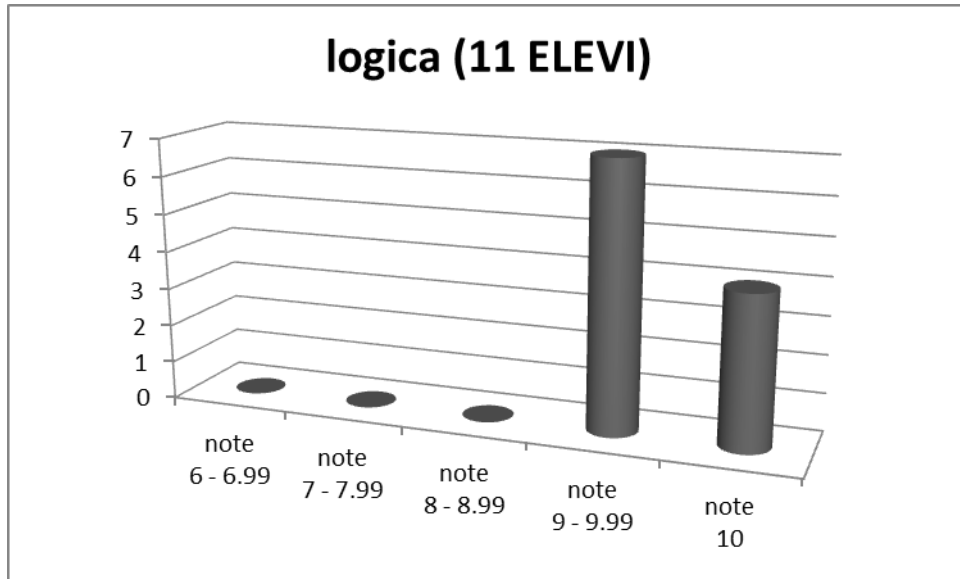


MEDIA NOTELOR OBȚINUTE LA GEOGRAFIE

9,40

LOGICA

	note 6 - 6.99	note 7 - 7.99	note 8 - 8.99	note 9 - 9.99	note 10
logica (11 ELEVI)	0	0	0	7	4



MEDIA NOTELOR OBȚINUTE LA LOGICĂ

9,53